

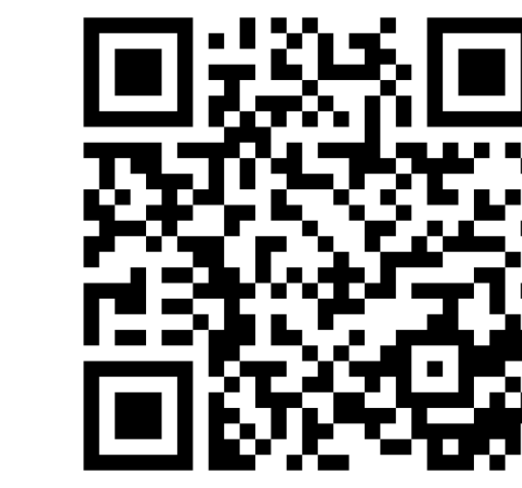
# Low traceability, low transparency, high deforestation in the Ivorian cocoa supply chain



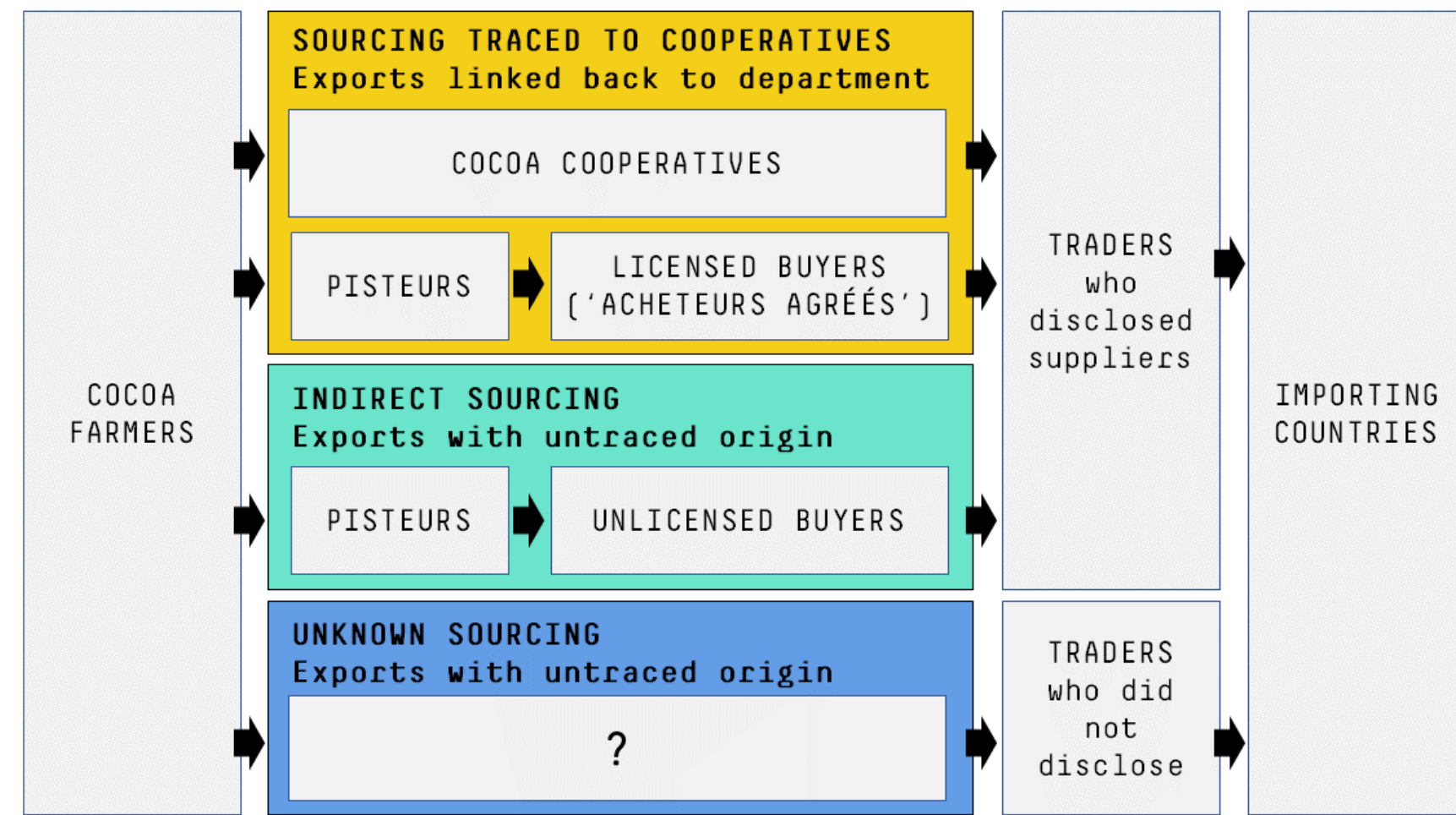
Cécile Renier<sup>1\*</sup>  
 Mathil Vandromme<sup>1</sup>, Patrick Meyfroidt<sup>1,2</sup>,  
 Vivian Ribeiro<sup>3</sup>, Nikolai Kalischek<sup>4</sup>,  
 Erasmus K. H. J. zu Ermgassen<sup>1</sup>

1 Earth and Life Institute, UCLouvain, Belgium.  
 2 F. R. S.-FNRS, Belgium.  
 3 Stockholm Environment Institute, Sweden.  
 4 EcoVision Lab, ETH Zurich, Switzerland

\*c.renier@uclouvain.be



Article preprint  
 Transparency, traceability and deforestation in the Ivorian cocoa supply chain, 2022.



Côte d'Ivoire is the world's largest producer of cocoa, growing about 40% of cocoa bean supplies. Around two thirds of its cocoa is exported to the EU and the UK.

We pulled together several publicly-available datasets to link cocoa production, and its associated deforestation, to specific companies and markets.

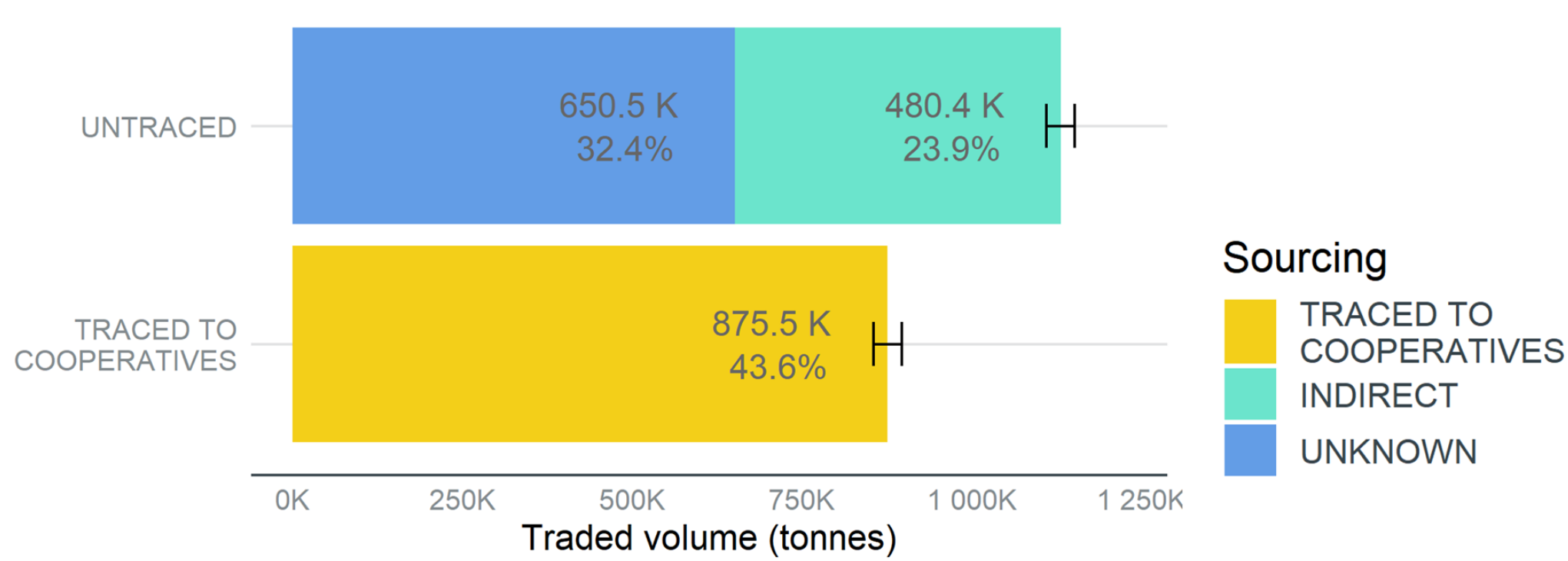
## 1. The majority of cocoa (over 55%) is untraced

32% exported by untransparent traders who disclose no information about their suppliers ('unknown' sourcing)

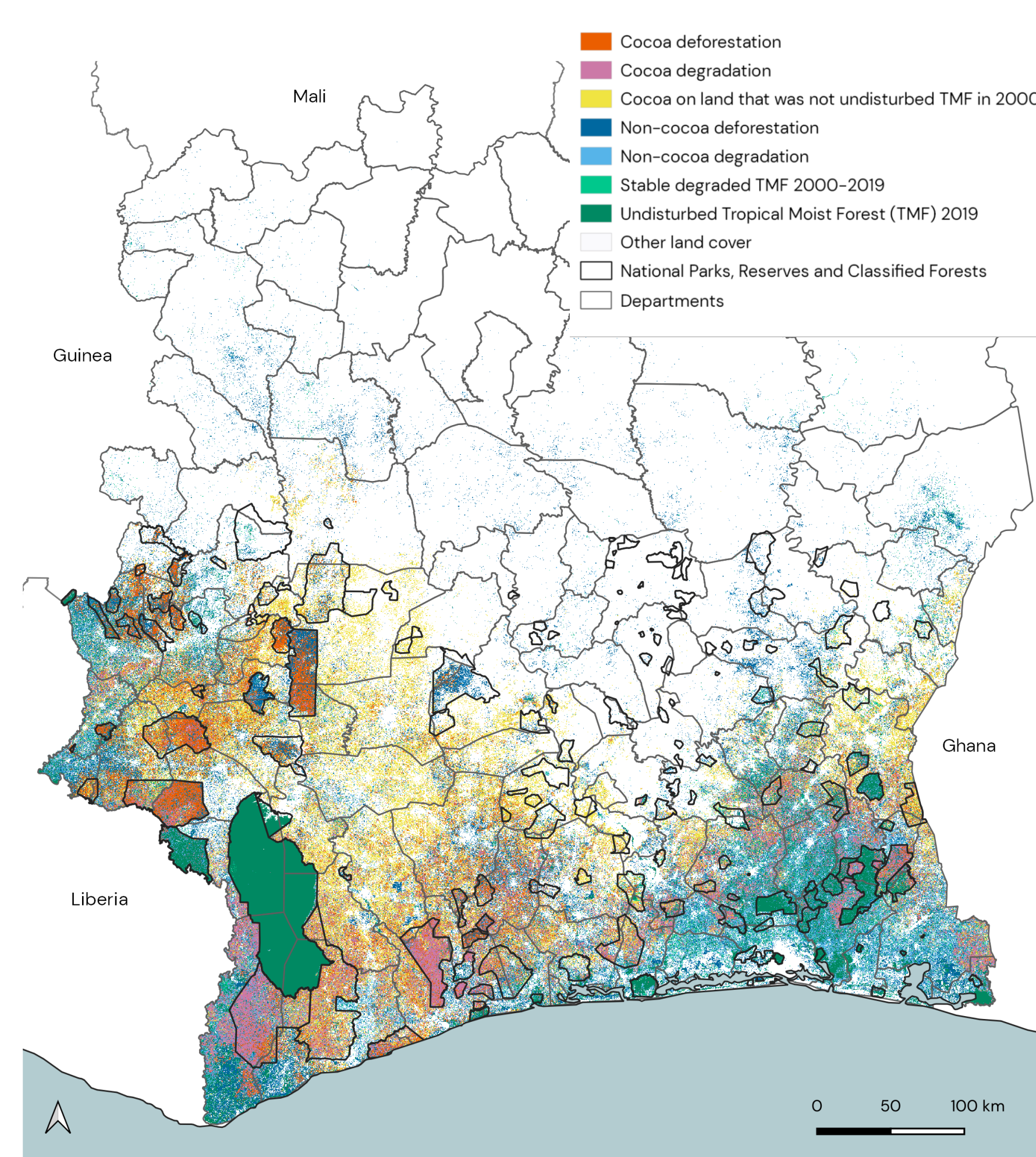
24% indirectly sourced from local intermediaries by major traders and is nearly impossible to trace (95% CI: 22.9 - 24.9%).

20 to 70% of the major traders' sourcing is indirect.

Traceability to farm lags behind  
 Traders in the Cocoa and Forests Initiative mapped 40% of the farms supplying them, representing only 22% of all Ivorian cocoa exports in 2019.



## 2. Cocoa is a major driver of deforestation in Côte d'Ivoire



45% of the undisturbed tropical moist forest lost between 2000 and 2019 converted into cocoa (2.4 Mha).

In 2019, 25% of the cocoa area was located within protected areas and classified forests in Côte d'Ivoire.

## 3. Cocoa deforestation exposure is embedded in all the supply chain but mostly in the untraced sourcing

58% of the total cocoa deforestation is attributed to untraced sourcing (25% to indirect and 33% to unknown sourcing)

Per tonne, untraced sourcing is slightly more exposed to deforestation than sourcing traced to cooperatives (48 vs 45 ha/kton.y<sup>-1</sup>).

EU is exposed to 838,000 ha of deforestation from Ivorian cocoa with 56% from untraced sources.



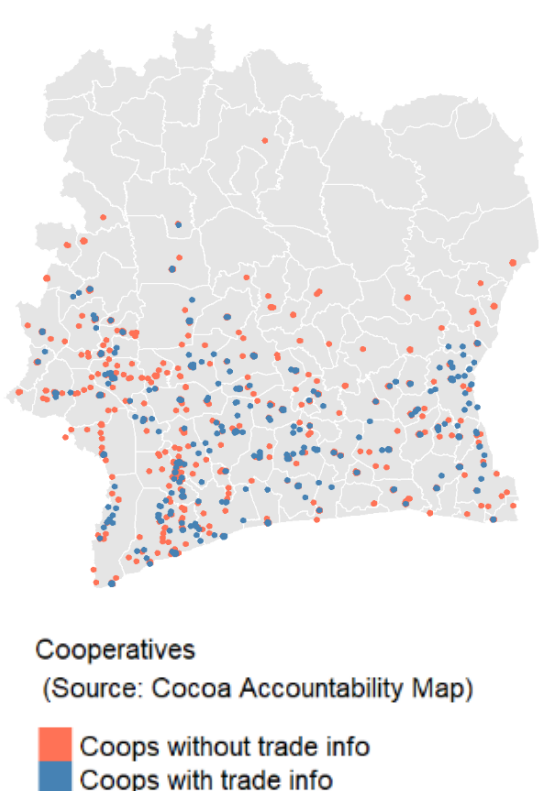
## Conclusion

# The sector needs to work beyond individual supply chains

- Incorporating indirect sourcing in zero deforestation commitments
- Need for transparent, nationwide traceability systems – also key for better traced payments to farmers – coupled with a robust deforestation monitoring system
- Must be combined with land use policies, landscape initiatives, and increased means targeting remaining forests

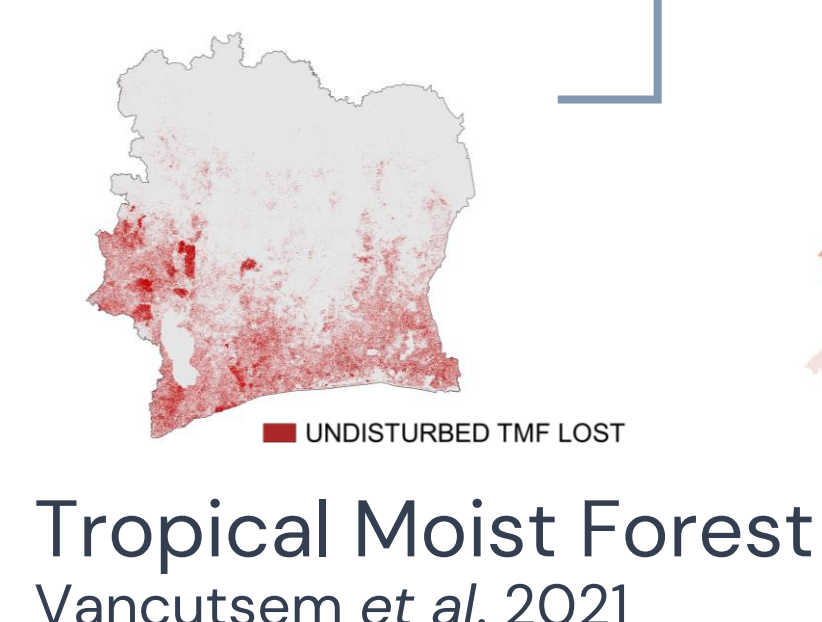
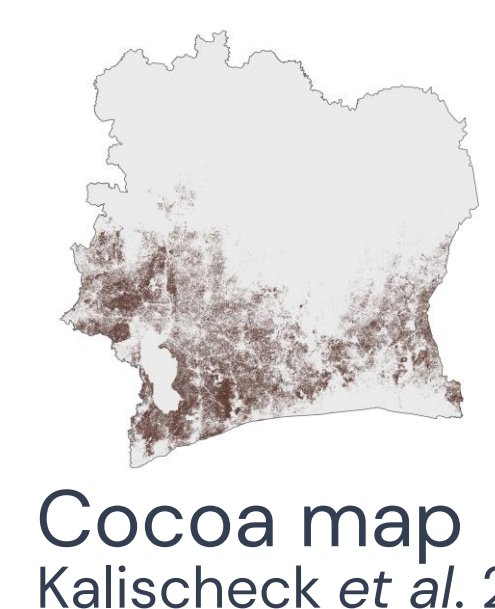
## Methods

Sourcing traced to cooperatives

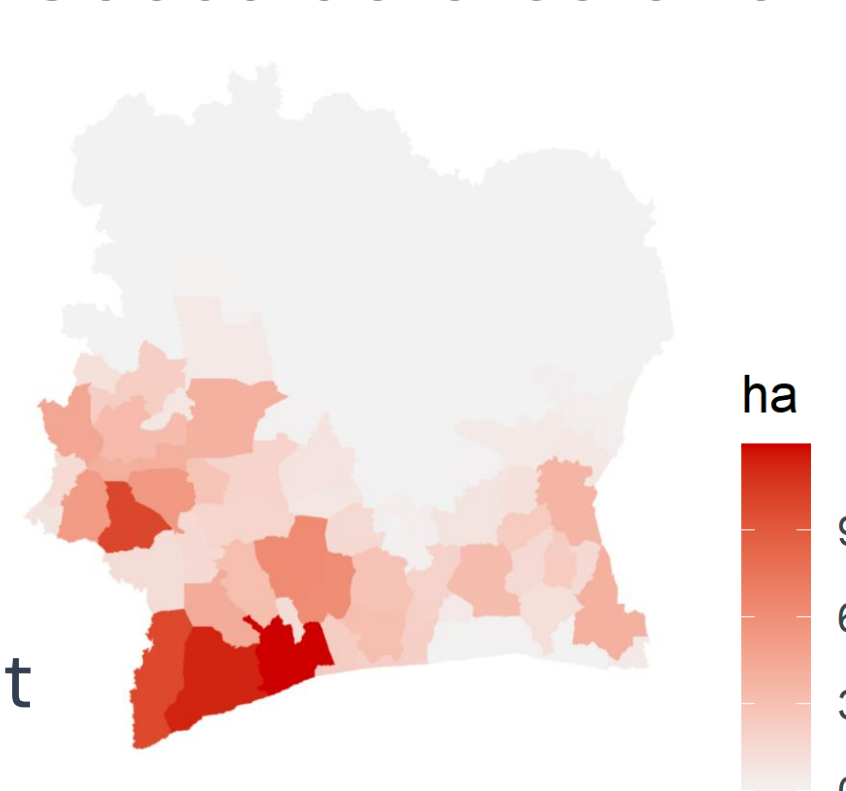


Number of farmers per cooperative  
 X Production per farmer  
 = Volumes traced to cooperatives

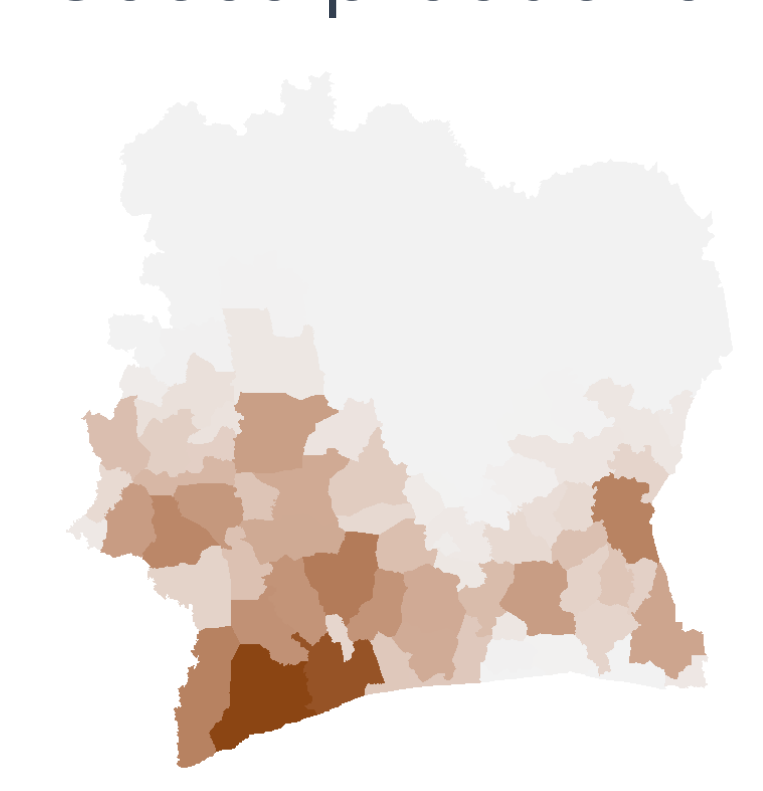
Exports – Volumes traced = Indirect sourcing



Cocoa deforestation

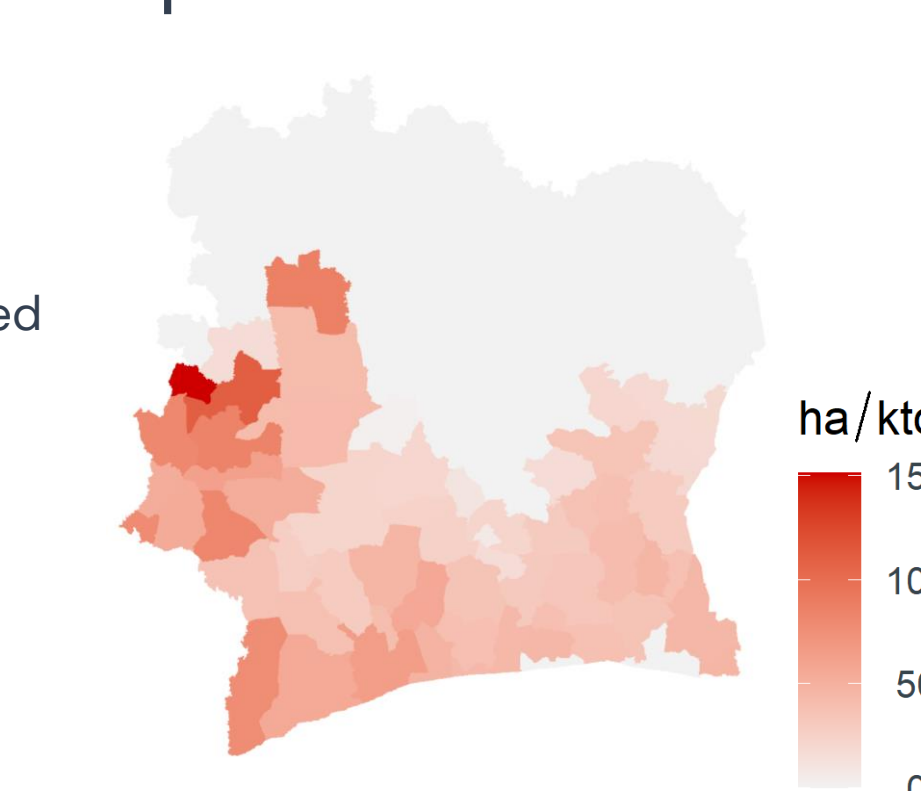


Cocoa production



Cocoa map X Suitability [0-1] = Cocoa area per department weighted by Suitability  
 & National cocoa volume = Cocoa production per department

Cocoa deforestation exposure



Cocoa deforestation ÷ Cocoa production = Relative cocoa deforestation (ha/ton produced)  
 & Volume per trader = Company or importing country cocoa deforestation exposure (ha / ton sourced)